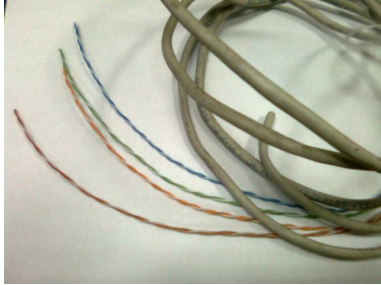


## How to make cemenite from network wire

Get about 5 meter long network wire, CAT5, single solid core copper, PVC insulated:



Remove the outer insulation and undo the twist. Then roll/wound it on a 3mm rod. The direction of winding must be clockwise if seen going further away from you:



Cut it to make coils between 5 to 10mm, or three wind each. Make enough coils to fill 8 cm diameter 5cm height. Correct direction of winding is very important. Must be like this:



Prepare the ordinary portland cement:



Add some water, mix it well:



Add the coil, mix it well:



Pour it into the mould. You can also put the coils first, then pour. Mould must be a cylinder. 8cm diameter 5cm height is for outdoor use. Use 7cm diameter for indoor or vehicle. :



Make sure the coils are packed, no cement without coils, remove excess cement.



Dry in room temperature (can take two days):



Make sure it produce clear ice, make sleep better, and increase vehicle power.

Good luck !!! (Suchyo)

Even if it is easy to make, mistake can happen. It is important to test cemenite before continuous use.

The first test should be water freezing. Freeze the cemenite in a water. A good cemenite should make the ice around it to be clear/transparent:



Then see if putting cemenite in the corner of the bedroom will ease the sleep.

Cemenite should also increase the mileage/power of car or motorcycle. Put the cemenite under the fuel tank or fuel line. You should use small version, the one with 7cm diameter. See if adding cemenite increase torque, top speed or acceleration. Cemenite work better with cheap fuel.

Try to put cemenite on top of the soil of a plant. See the change of growth / leaf size within a few weeks.

If you put cemenite outdoor, see if birds will fly high around the cemenite. See if low clouds will

show up instead of high clouds or high haze.

Do not put two cemenite nearby outdoor. Use three or six in triangle or hexagonal configuration.

Do not put cemenite under an HDPE plastic.

Cemenite should reduce drought, flood, and lightning.

If you want to neutralize dirty electricity / harmful EMF, put cemenite under the suspected device / installation wire .

Try to put cemenite in the bottom of refrigerator to observe its effect to the food or drinks inside the refrigerator.

Cemenite must be fully packed with coils, the coils must be at correct winding direction.

Failing to do so may cause cemenite to produce unwanted energy. Or cause cemenite to loose energy within few weeks.

Make sure that every part of the cemenite filled with coils.

You can also use NYA wire. Or spesifically Single core NYA 2.5mm PVC insulated copper wire. You use 9mm inner diameter for the coils. two winds each coils. However, network wire still produce better results.

When you mix, putting the water first will mix the cement easier.



Note:

Cemenite energy must be evenly distributed. Every part must have the same energy strength and quality as the other part. Because if there is unequality, then it become polarized. When cemenite polarized, it will loose power.

So mixing two different size of wire is bad. Uneven coil density is bad. Mold shape with uneven energy distribution is bad.

If you use big wire, it is better to arrange the coils before you pour the portland cement - water mix, in an even / uniform arrangement.

If you use small wire, make sure that every part has equal number of coils. The bottom must have the same amount of coils as the top.

### **Chronology of cemenite effect discovery:**

- change ice pattern. Produce clear ice, sometime with vertical air bubble. Bad orgone produce white/foggy ice.
- improve sleep, cure insomnia, less headache, less nausea, less ringing ears, less hard to breath, less cold feet, less stomach bug, less whispering voices, less cold feet
  - increase fuel octane, increase mileage, increase power, increase fire of gas stove
    - more birds chirp, more birds flying around
      - improve water taste and food
        - calm emotion
    - more periodic rain, but rain is not intense, less flood, less drought
      - rain in dry season
  - more fog in the morning or after raining, especially after chemtrails attack
    - less lightning
    - less tornado
    - less storm
    - reduce cirrus dominance
    - increase nimbus dominance
- produce rain if the area is filled with cirrus for days and never rain for weeks, first operation can induce drizzle.

### **Another finding:**

- range for the sky is about 5km, for the plants is about 2 meter
- different coil diameter change the size / shape of the bubble
- adding other material reduce power or make cemenite bad
  - metal tube or pipe make cemenite produce bad energy
  - cylinder / tube shape is the best shape for cemenite
- rotating cemenite may make it stronger, but bad for long use
  - ant hole is sign of failure / bad cemenite
- excessive cement will make cemenite no longer work after few months, destroying the excessive cement may maake it work again
- cemenite have zero psychic power. Psychic can not detect its energy, cemenite will not change psychic power, and cemenite have no influence to ghost. Cemenite is purely physics. But cemenite will ease the effect of ghost haunt / targetted individual.